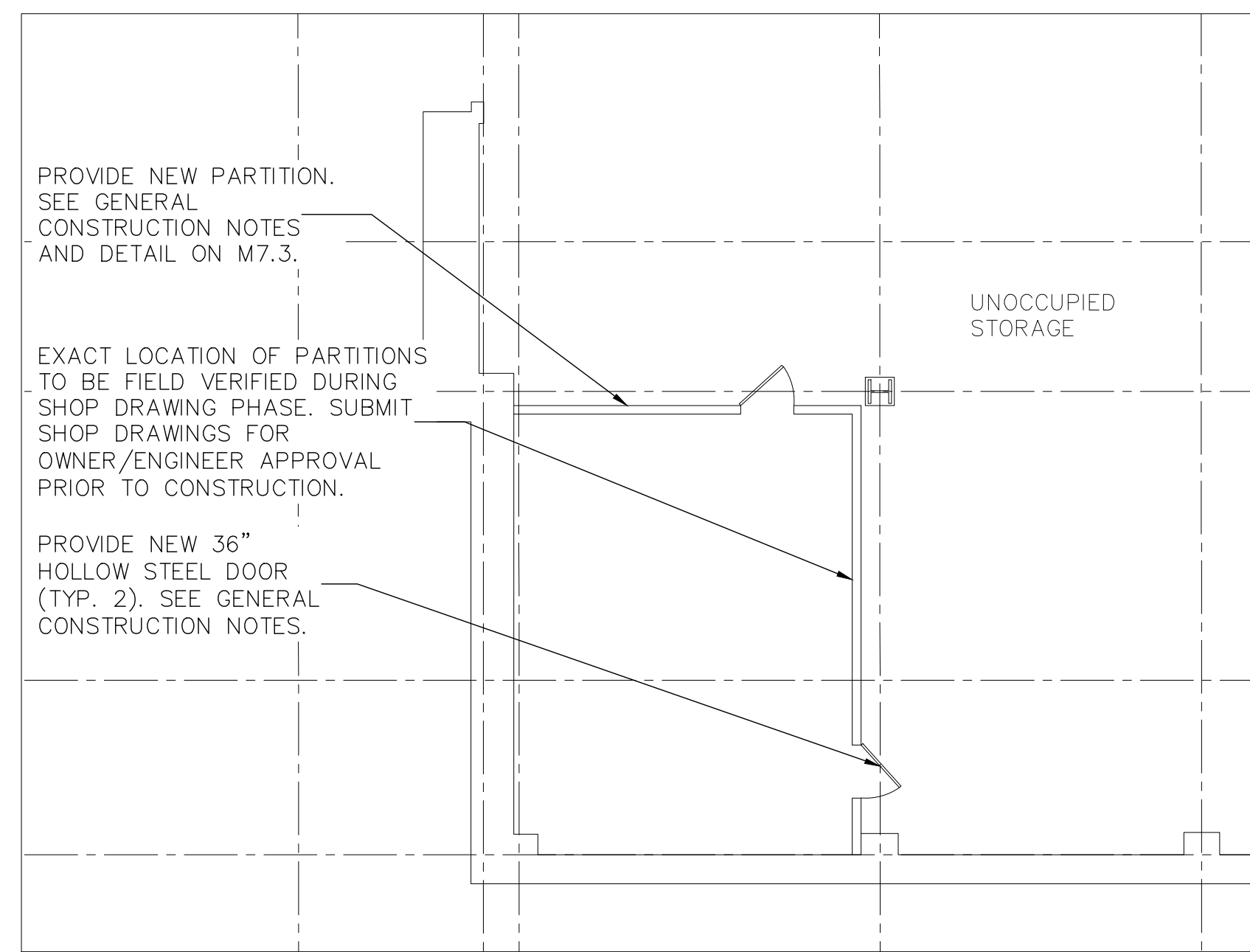
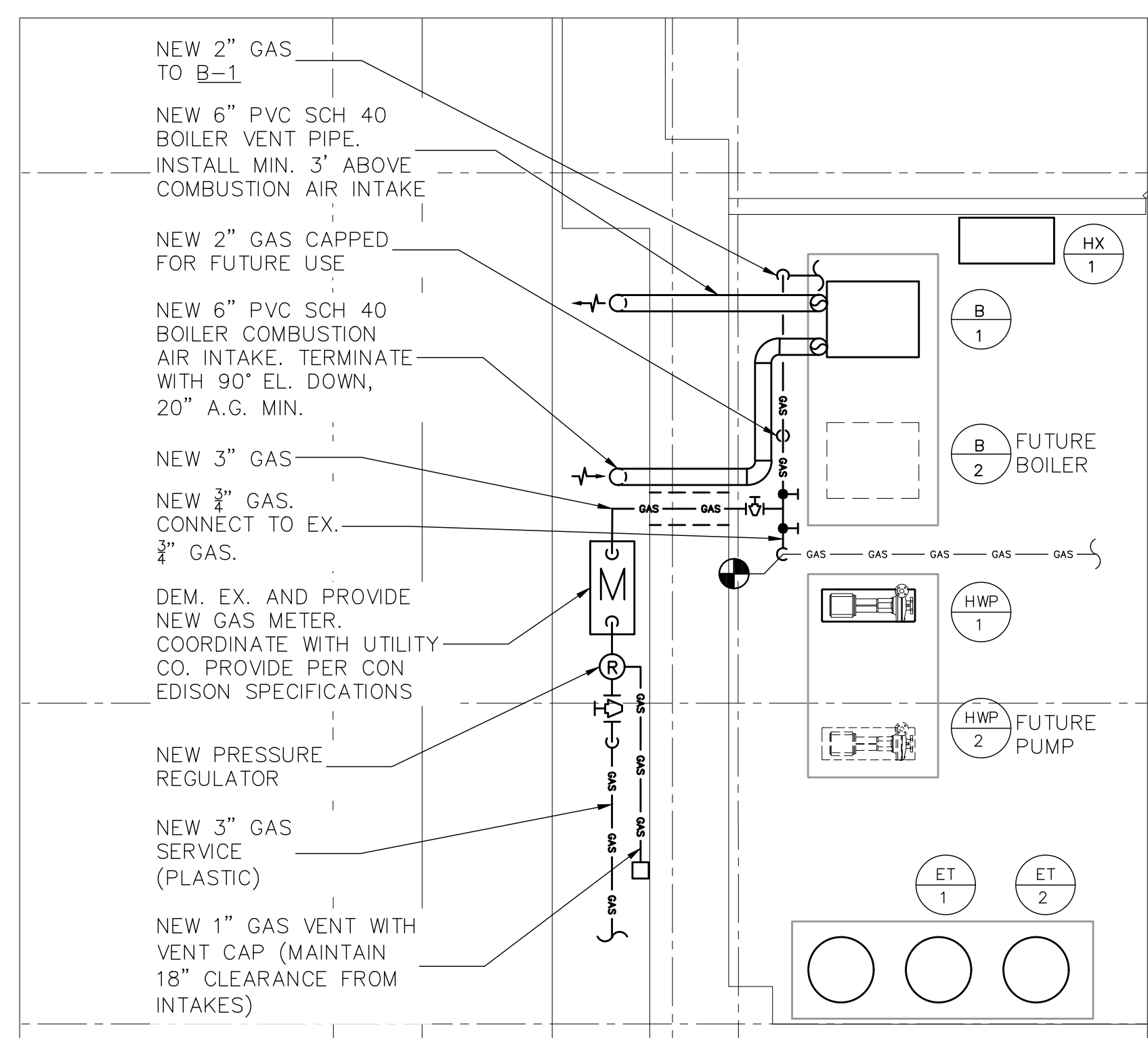


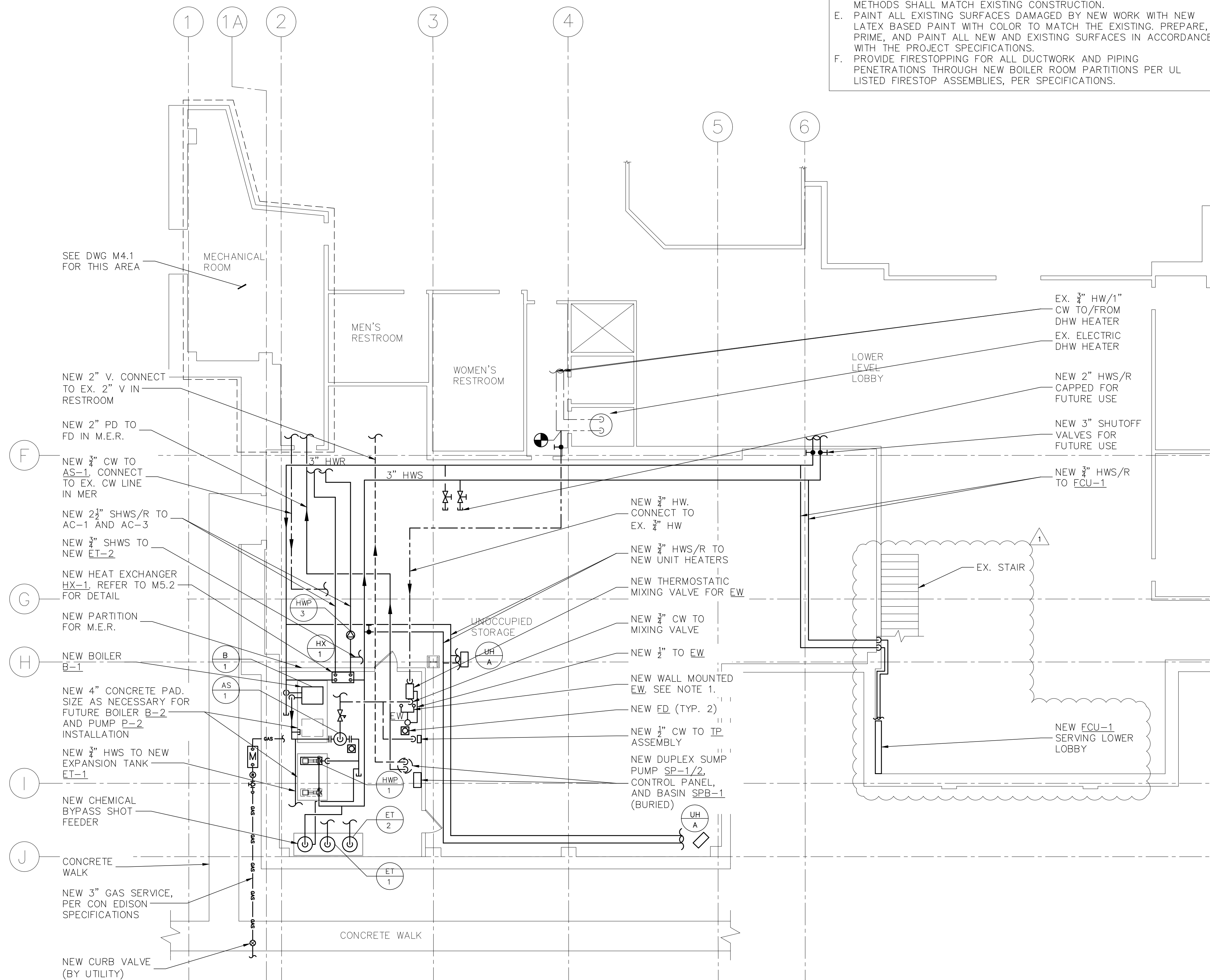
4 PLUMBING SUB-SLAB PARTIAL NEW WORK PLAN
SCALE: 1/8" = 1'-0"
NORTH



3 PARTITION NEW WORK PLAN
SCALE: 1/8" = 1'-0"
NORTH



2 MECHANICAL BOILER VENTING AND GAS PIPING PLAN
SCALE: 1/4" = 1'-0"
NORTH



1 MECHANICAL/PLUMBING LOWER LEVEL PARTIAL NEW WORK PLAN
SCALE: 1/8" = 1'-0"
NORTH

GENERAL CONSTRUCTION NOTES:

- PROVIDE NEW SHEETROCK PARTITIONS AS SHOWN. CONSTRUCTION SHALL BE PER UL DESIGN 419:
 - 3-1/2" 25 GAUGE STEEL STUD; 24" O.C.
 - (1) LAYER 5/8" SHEETROCK PANELS ON EACH SIDE (4-3/4" ASSEMBLY). FIRECODE C CORE GYPSUM PANELS OR EQUAL
 - 1-HOUR FIRE RATED
 - FACE LAYER JOINTS FINISHED
 - FLOOR AND CEILING RUNNERS; CHANNEL SHAPED, FABRICATED FROM MIN. 25 MSG CORROSION-PROTECTED STEEL, MIN. DEPTH TO ACCOMMODATE STUD SIZE, WITH MIN. 1-1/4" LONG LEGS, ATTACHED TO FLOOR AND CEILING WITH FASTENERS 24" OC MAX.
 - FASTENERS; TYPE S OR S-12 STEEL SCREWS USED TO ATTACH PANELS TO STUDS, 1" LONG FOR 5/8" THICK PANELS, SPACED 8" OC WHEN PANELS ARE APPLIED HORIZONTALLY, OR 8" OC ALONG VERTICAL AND BOTTOM EDGES AND 12" OC IN THE FIELD WHEN PANELS ARE APPLIED VERTICALLY.
- PROVIDE NEW 90 MINUTE FIRE-RATED STEEL DOOR (36"x80") WITH STEEL LINTEL. SEE DETAIL ON M7.3.
- PRIME AND PAINT ALL NEW SURFACES.
- PROVIDE ALL CUTTING AND PATCHING OF MASONRY WALLS, PARTITIONS, CEILINGS, ETC. AS REQUIRED TO FACILITATE THE MECHANICAL AND ELECTRICAL WORK. PATCHING MATERIALS AND METHODS SHALL MATCH EXISTING CONSTRUCTION.
- PAINT ALL EXISTING SURFACES DAMAGED BY NEW WORK WITH NEW LATEX BASED PAINT WITH COLOR TO MATCH THE EXISTING. PREPARE, PRIME, AND PAINT ALL NEW AND EXISTING SURFACES IN ACCORDANCE WITH THE PROJECT SPECIFICATIONS.
- PROVIDE FIRESTOPPING FOR ALL DUCTWORK AND PIPING PENETRATIONS THROUGH NEW BOILER ROOM PARTITIONS PER UL LISTED FIRESTOP ASSEMBLIES, PER SPECIFICATIONS.

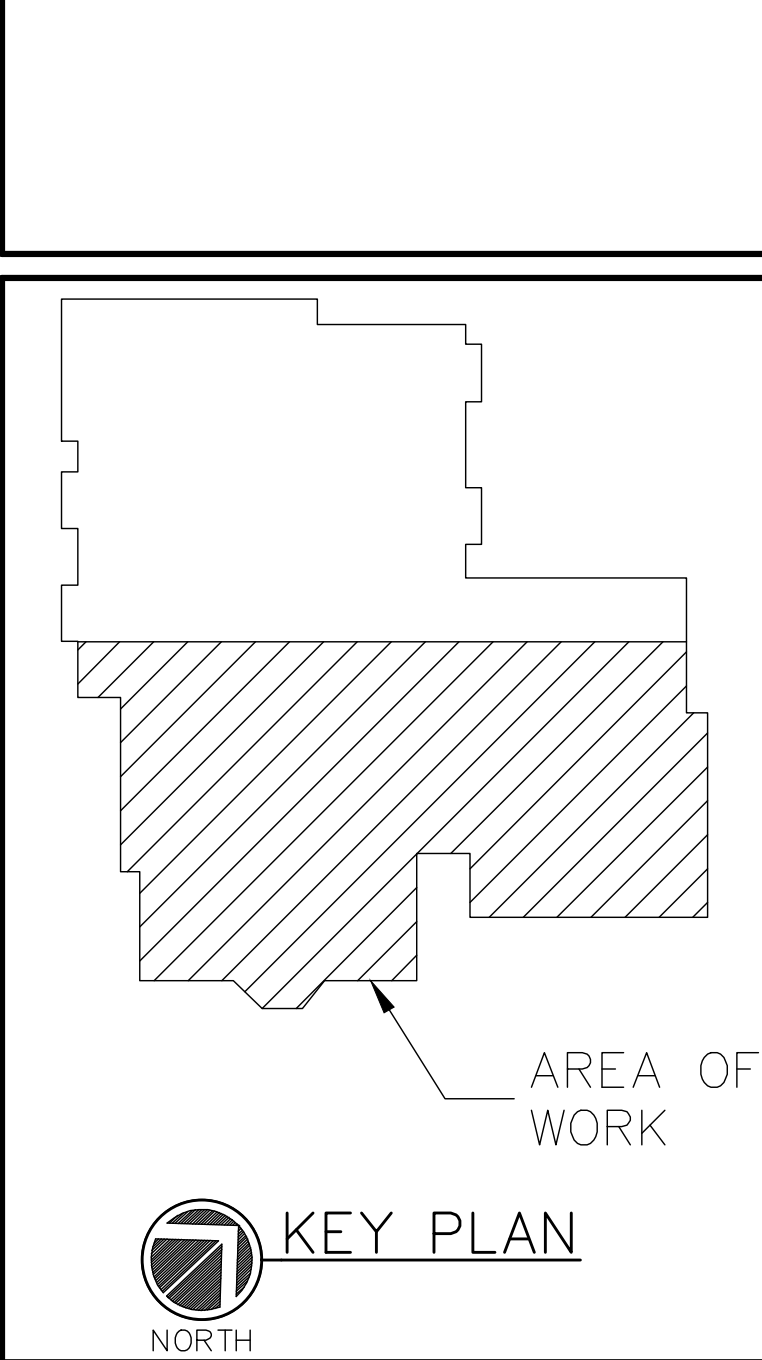
OLA Consulting Engineers
50 Broadway, Hawthorne,
New York, NY 10532
914.747.2800

12 East 49th Street, 11th Fl.
New York, NY 10017
646.849.4110

ola.com

CLIENT

OSSINING PUBLIC LIBRARY
53 CROTON AVE
OSSINING, NY 10562



No.	ISSUE OR REVISION	DATE
1	ISSUED FOR BID	7/31/19
ADDENDUM #1		8/8/19

No use, reproduction or dissemination may be made of this drawing and the concepts set forth without the prior written consent of OLA Consulting Engineers, PC. Copyright ©

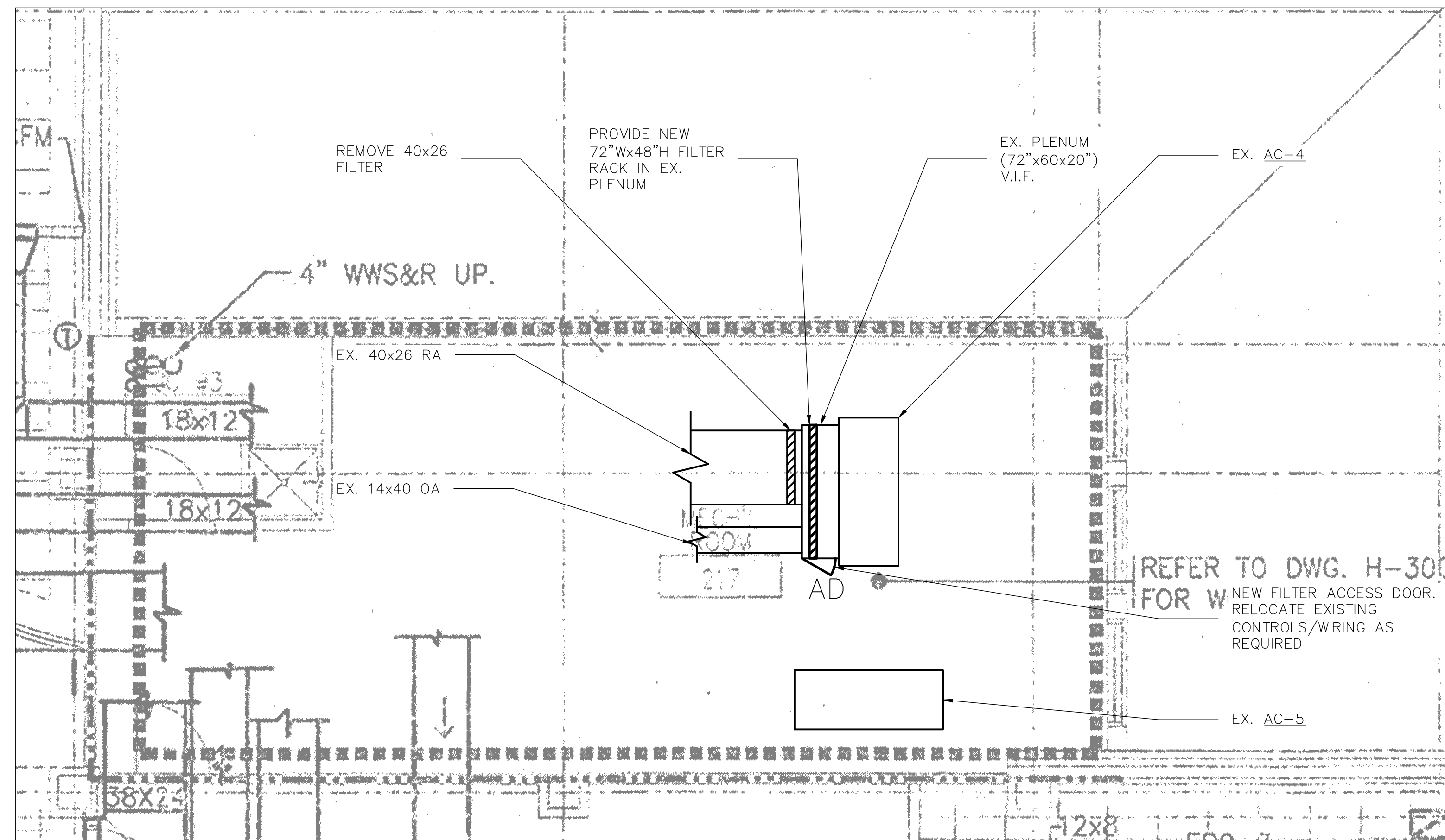
PROJECT TITLE

**OSSINING PUBLIC LIBRARY
BOILER PLANT AND
HVAC UPGRADES**
53 CROTON AVENUE
OSSINING, NY 10562

DRAWING TITLE

**MECHANICAL/PLUMBING
LOWER LEVEL PARTIAL
NEW WORK PLAN**

SCALE	PROJECT NO.
AS NOTED <td></td>	
DRAWN BY AC	DRAWING NO.
CHECKED BY JK	MP21
DATE 7/16/19	



1 MECHANICAL UPPER LEVEL M.E.R. NEW WORK PLAN
SCALE: 1/4" = 1'-0"
NORTH

SCOPE OF WORK NOTES

AC-4

A. MECHANICAL:

1. CURRENTLY THERE IS A HIGH STATIC PRESSURE ACROSS THE EXISTING 40X26 RETURN AIR FILTERS (0.9"WC). PROVIDE A NEW FILTER RACK IN THE EXISTING RETURN AIR PLENUM. FILTER RACK SIZE SHALL BE APPROXIMATELY 72"W X 48"H X 2" THICK. BLANK-OFF UNUSED PORTIONS OF THE PLENUM WITH SHEET METAL TO AVOID FILTER RACK BYPASS OF AIR. PROVIDE NEW SIDE ACCESS DOORS TO ALLOW REMOVAL OF NEW FILTERS. PROVIDE NEW MERV 7 PLEATED FILTERS : FOUR (4) AT 36X24X2. RELOCATE EXISTING CONTROLS AND WIRING MOUNTED TO AIR PLENUM TO ACCOMMODATE THE NEW FILTER RACK.

B. BMS:

1. VERIFY CALIBRATION OF SUPPLY AIR STATIC PRESSURE SENSOR.
2. PROVIDE SERVICE FOR THE VFD'S TO RELEASE THE SUPPLY FAN VFD TO ALLOW IT TO MODULATE UP TO 60 HZ, CURRENTLY LIMITED TO 55 HZ.
3. ENABLE ERVF-4 TO MODULATE ITS SPEED WHENEVER AC-4'S SUPPLY FAN IS OPERATING IN THE OCCUPIED MODE. COORDINATE WITH THE BALANCER TO OFFSET THE EXHAUST CFM AN ADJUSTABLE OFFSET VALUE FROM THE SUPPLY CFM TO PROVIDE POSITIVE BUILDING PRESSURE.
4. DELETED.
5. PROVIDE AN ADDITIONAL BMS ANALOG OUTPUT POINT AND PROGRAMMING TO ALLOW FOR INDEPENDENT CONTROL OF THE OUTSIDE AIR DAMPER.

C. BALANCING:

1. PERFORM AIR AND WATER BALANCE ON AC-4/ERVF-4. PROVIDE NEW SHEAVE CHANGES TO ALLOW THE SUPPLY AND EXHAUST FANS TO DELIVER THEIR DESIGN CFM WITHOUT EXCEEDING THE MOTOR RATED RLA OF EACH MOTOR.
2. DELETED.
3. CALIBRATE THE OUTSIDE AIR DAMPER TO MAINTAIN THE VENTILATION MINIMUM OUTSIDE AIR QUANTITY PER THE ORIGINAL DESIGN DOCUMENTS.

AC-5

A. BMS:

1. VERIFY CALIBRATION OF SUPPLY AIR STATIC PRESSURE SENSOR.
2. ENABLE ERVF-5 TO MODULATE ITS SPEED WHENEVER AC-5'S SUPPLY FAN IS OPERATING IN THE OCCUPIED MODE. COORDINATE WITH THE BALANCER TO OFFSET THE EXHAUST CFM AN ADJUSTABLE OFFSET VALUE FROM THE SUPPLY CFM.
3. COORDIANTE WITH THE BALANCER TO ESTABLISH TO CORRECT ERVF-5 SPEED NECESSARY TO KEEP THE BUILDING SLIGHTLY POSITIVE WITH RELATIONSHIP TO THE OUTSIDE.
4. PROVIDE AN ADDITIONAL BMS ANALOG OUTPUT POINT AND PROGRAMMING TO ALLOW FOR INDEPENDENT CONTROL OF THE OUTSIDE AIR DAMPER.

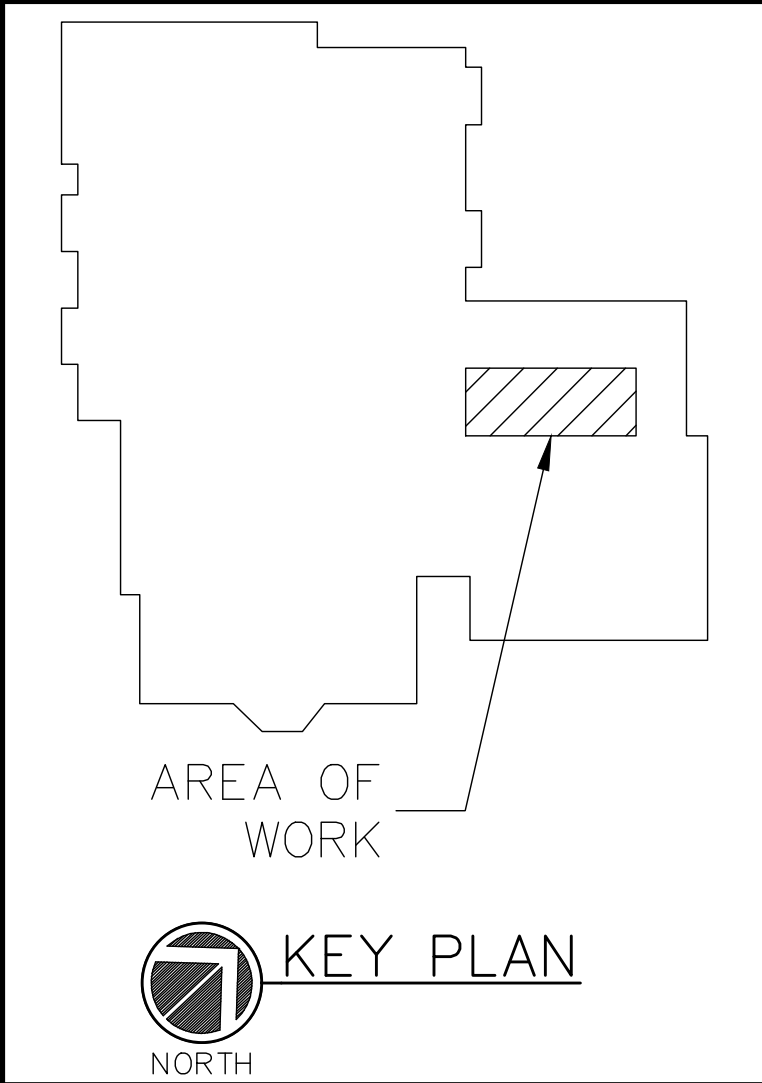
B. BALANCING:

1. CURRENTLY, THE TWO SUPPLY FANS ARE NOT OPERATING AT THE SAME RPM. REPLACE THE MOTOR SHEAVES' AND DRIVE BELTS ON EACH FAN. ADJUST SHEAVES ON BOTH FANS TO DELIVER DESIGN CFM WITHOUT EXCEEDING RLA OF THE MOTORS. VERIFY NEW RPM'S ON BOTH SUPPLY AIR FANS ARE BALANCED.
2. PERFORM AIR AND WATER BALANCE ON AC-5/ERVF-5. PROVIDE NEW SHEAVE CHANGES TO ALLOW THE SUPPLY AND EXHAUST FANS TO DELIVER THEIR DESIGN CFM.
3. CALIBRATE THE OUTSIDE AIR DAMPER TO MAINTAIN THE VENTILATION MINIMUM OUTSIDE AIR QUANTITY PER THE ORIGINAL DESIGN DOCUMENTS.

OLA Consulting Engineers
50 Broadway, Hawthorne,
New York 10532
914.747.2800
12 East 49th Street, 11th Flr.
New York, NY 10017
646.849.4110
olace.com

CLIENT

OSSINING PUBLIC LIBRARY
53 CROTON AVE
OSSINING, NY 10562



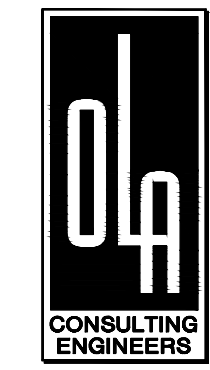
No.	ISSUE OR REVISION	DATE
1	ISSUED FOR BID	7/31/19
ADDENDUM #1		8/8/19

No use, reproduction or dissemination may be made of this drawing and the concepts set forth without the prior written consent of OLA Consulting Engineers, P.C. Copyright ©

PROJECT TITLE
**OSSINING PUBLIC LIBRARY
BOILER PLANT AND
HVAC UPGRADES**
53 CROTON AVENUE
OSSINING, NY 10562

DRAWING TITLE
**MECHANICAL UPPER LEVEL
M.E.R. NEW WORK PLAN**

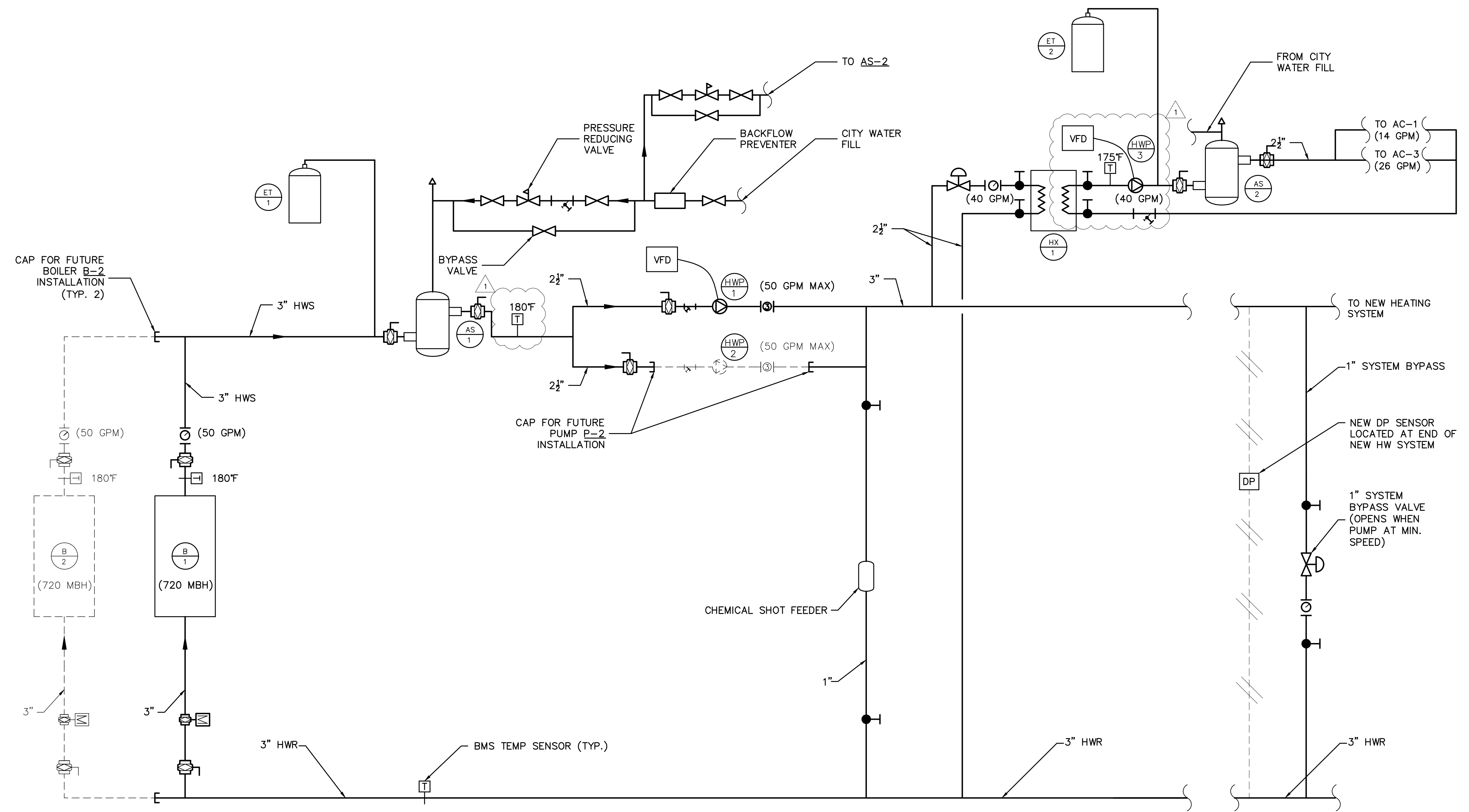
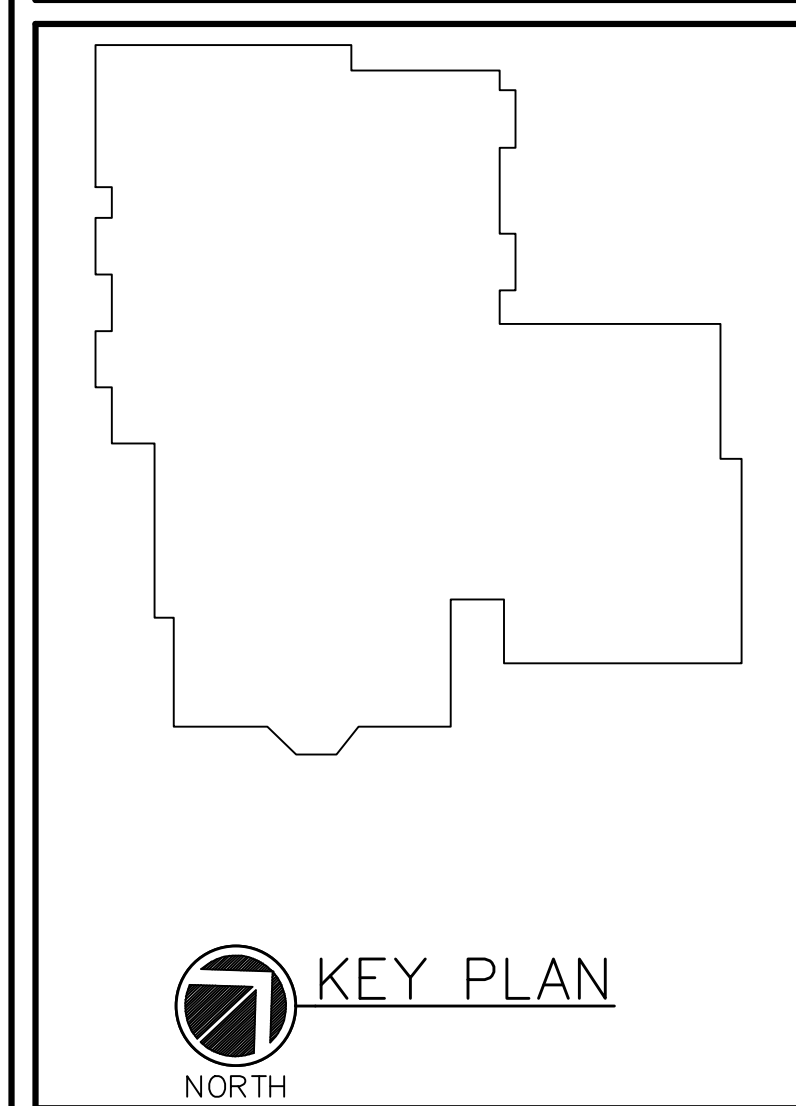
SCALE AS NOTED	PROJECT NO.
DRAWN BY AC	DRAWING NO.
CHECKED BY JK	M4.3
DATE 7/16/19	



OLA Consulting Engineers
 50 Broadway, Hawthorne,
 New York 10532
 914.747.2800
 12 East 49th Street, 11th Flr.
 New York, NY 10017
 646.849.4110
 ola.com

CLIENT

OSSINING PUBLIC LIBRARY
 53 CROTON AVE
 OSSINING, NY 10562



1 HOT WATER SYSTEM PARTIAL FLOW SCHEMATIC
 SCALE: NONE

1	ADDENDUM #1	8/8/19
1	ISSUED FOR BID	7/31/19
No.	ISSUE OR REVISION	DATE

No use, reproduction or dissemination may be made of this drawing and the concepts set forth without the prior written consent of OLA Consulting Engineers, PC. Copyright ©

PROJECT TITLE
**OSSINING PUBLIC LIBRARY
 BOILER PLANT AND
 HVAC UPGRADES**
 53 CROTON AVENUE
 OSSINING, NY 10562

DRAWING TITLE
**MECHANICAL
 SCHEMATICS**

SEAL	SCALE AS NOTED	PROJECT NO.
	DRAWN BY AC	DRAWING NO.
	CHECKED BY JK	M5.1
	DATE 7/16/19	

PLUMBING FIXTURE SCHEDULE								
TAG	SYMBOLS		FIXTURES	PLUMBING CONNECTIONS				DESCRIPTION
	PLAN	ELEVATION		WASTE	VENT	COLD WATER	HOT WATER	
FD			FLOOR DRAIN	2"	-	-	-	ZURN MODEL Z461, MODULAR NON-ADJUSTABLE FLOOR DRAIN WITH CLAMPING FRAME. DURA-COATED CAST IRON LOW-PROFILE BODY WITH 2" BOTTOM OUTLET, COMBINATION NICKEL BRONZE MEMBRANE CLAMP AND FRAME WITH SEEPAGE SLOTS, AND SQUARE HEEL-PROOF, SLOTTED LIGHT-DUTY SECURED STRAINER. TRAP PRIMERS, TP: PROVIDE TRAP PRIMER ASSEMBLY BASED ON PRECISION PLUMBING PRODUCTS (PPP INC.) MINI-PRIME ELECTRONIC TRAP PRIMING MANIFOLD, MODEL MPB-500-115V. TRAP PRIMER ASSEMBLY INCLUDES NEMA 1 12x12x4 RECESSED MOUNTING BOX, DISTRIBUTION UNIT (-DU), CIRCUIT BREAKER, TEST SWITCH, TIMER SOLENOID VALVE, AND ACCESS DOOR (D-814SS). PROVIDE ONE (1) TP ASSEMBLY TO SERVE FLOOR DRAINS.
EW			HAND OPERATED EMERGENCY EYEWASH, WALL MOUNTED	-	-	1/2"	1/2"	BRADLEY MODEL S19-220B, WALL-MOUNT EYEWASH WITH STAINLESS STEEL BOWL. HEAVY-GAUGE SAND CAST ALUMINUM WALL BRACKET, CHROME-PLATED BRASS 1/2" BALL VALVE, HAND OPERATED BY SAFETY YELLOW PVC HANDLE. PROVIDE NAVIGATOR S19-2000 EFX8 EMERGENCY THERMOSTATIC MIXING VALVE.

DUPLEX SUMP-PUMP SCHEDULE	
DESIGNATION	SP-1/2
LOCATION	BOILER ROOM
SYSTEM SERVED	HOT WATER
MODEL	SE-50
QUANTITY	2
TYPE	SUBMERSIBLE
GPM	50
TOTAL DYNAMIC HEAD (FT H ₂ O)	19
RPM	3,450
MOTOR:	
BHP/HP	-/0.5
VOLTAGE/φ/Hz	115/1/60

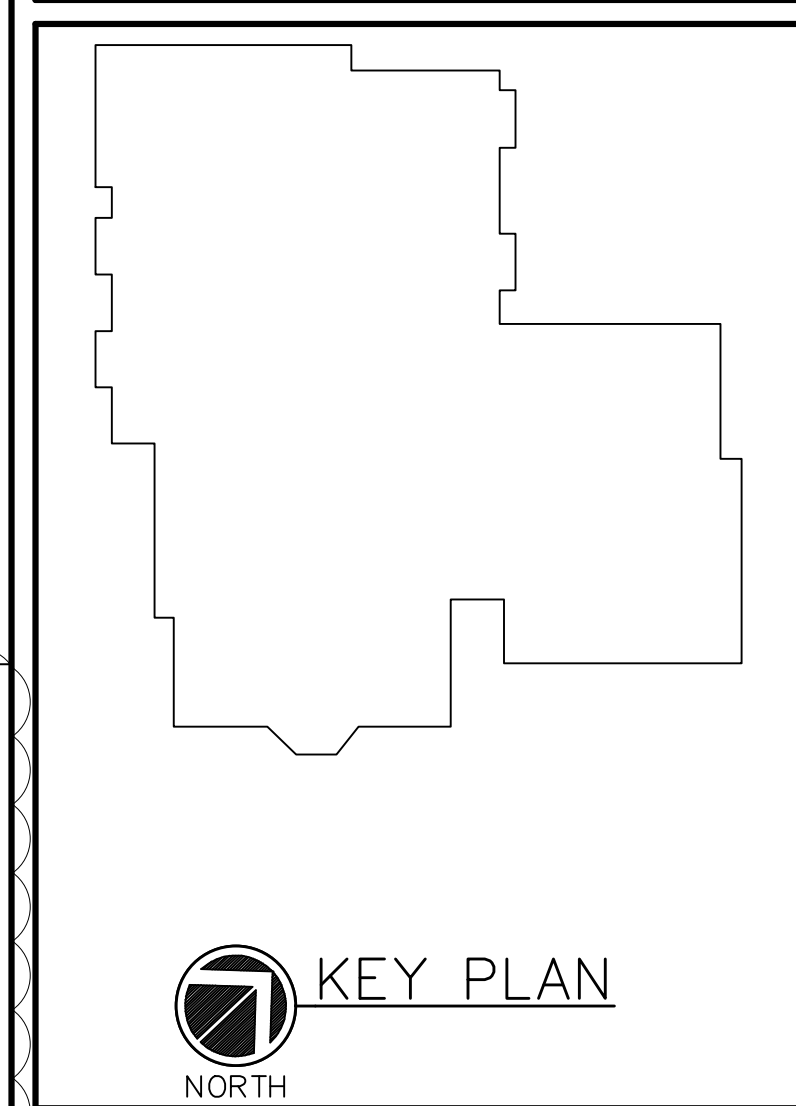
NOTES:
1. PUMP BASED ON STANCOR.
2. REFER TO SPECIFICATION FOR PUMP CONSTRUCTION.
3. PROVIDE DUPLEX PUMP CONTROL PANEL STANCOR MODEL CB1002 OR EQUAL.

SUMP-PUMP BASIN SCHEDULE	
DESIGNATION	SPB-1
LOCATION	BOILER ROOM
SYSTEM SERVED	HOT WATER
MODEL	GB-24-100
BASIN DIAMETER (ID)	24"
BASIN DEPTH	48"
DISCHARGE SIZE	2"
INLET SIZE	2"

NOTES:
1. BASIN BASED ON AK INDUSTRIES.
2. PROVIDE STEEL COVER.
3. PROVIDE BASIN WITH ANTI-FLOATATION FLANGE.
4. REFER TO SPECIFICATION FOR BASIN CONSTRUCTION.

OLA Consulting Engineers
50 Broadway, Hawthorne,
New York 10532
914.747.2800
12 East 49th Street, 11th Flr.
New York, NY 10017
646.849.4110
ola.com

CLIENT
OSSINING PUBLIC LIBRARY
53 CROTON AVE
OSSINING, NY 10562



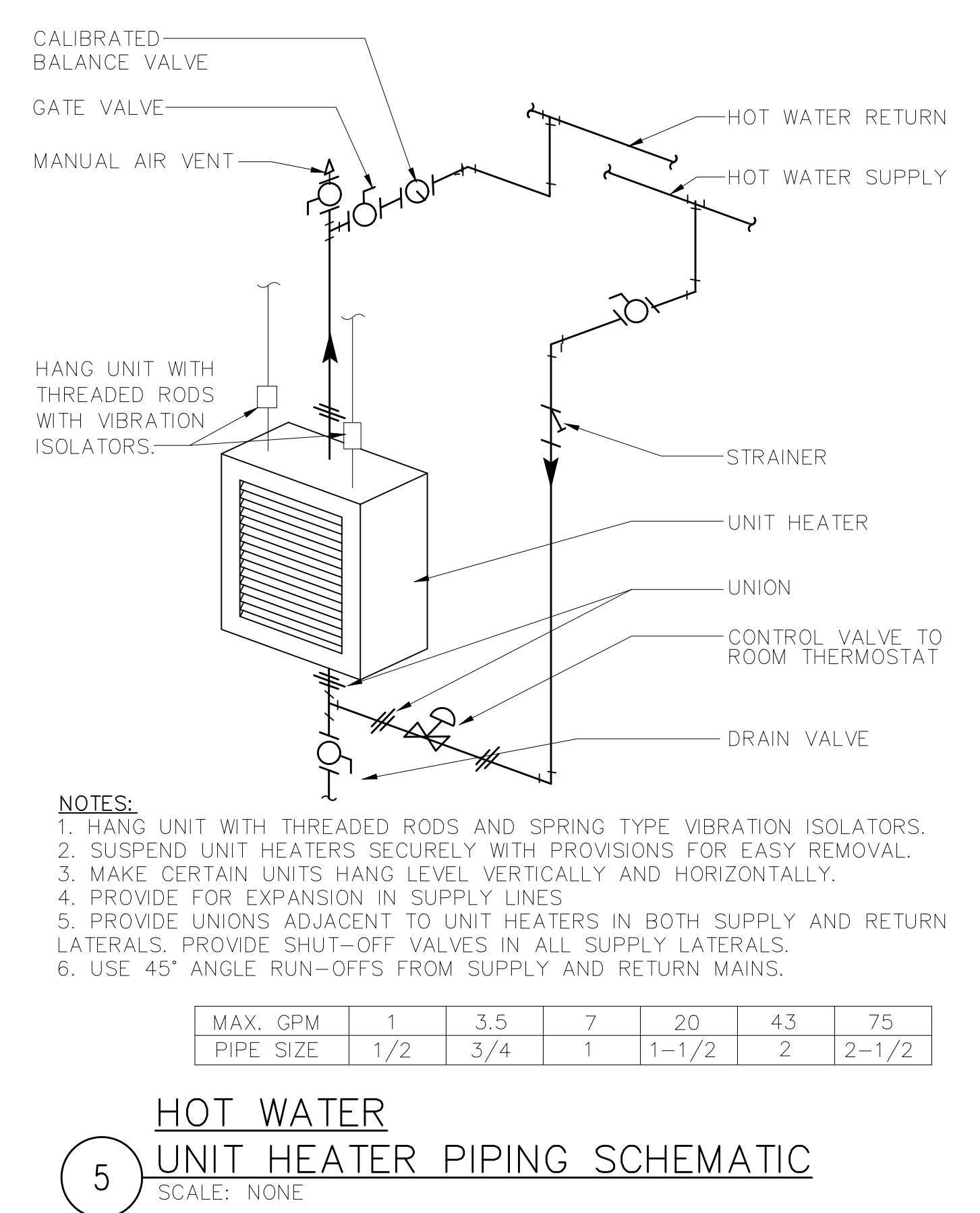
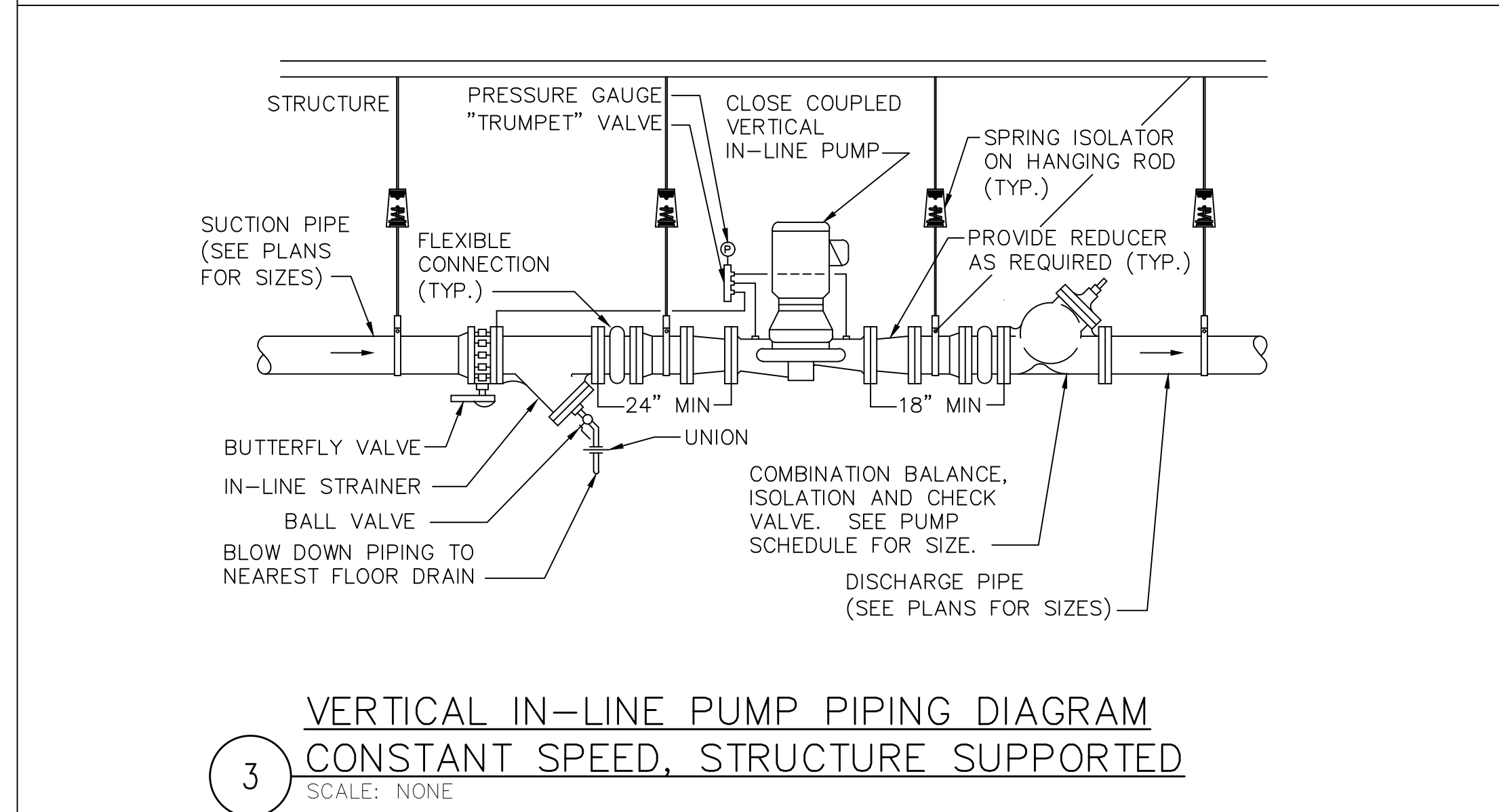
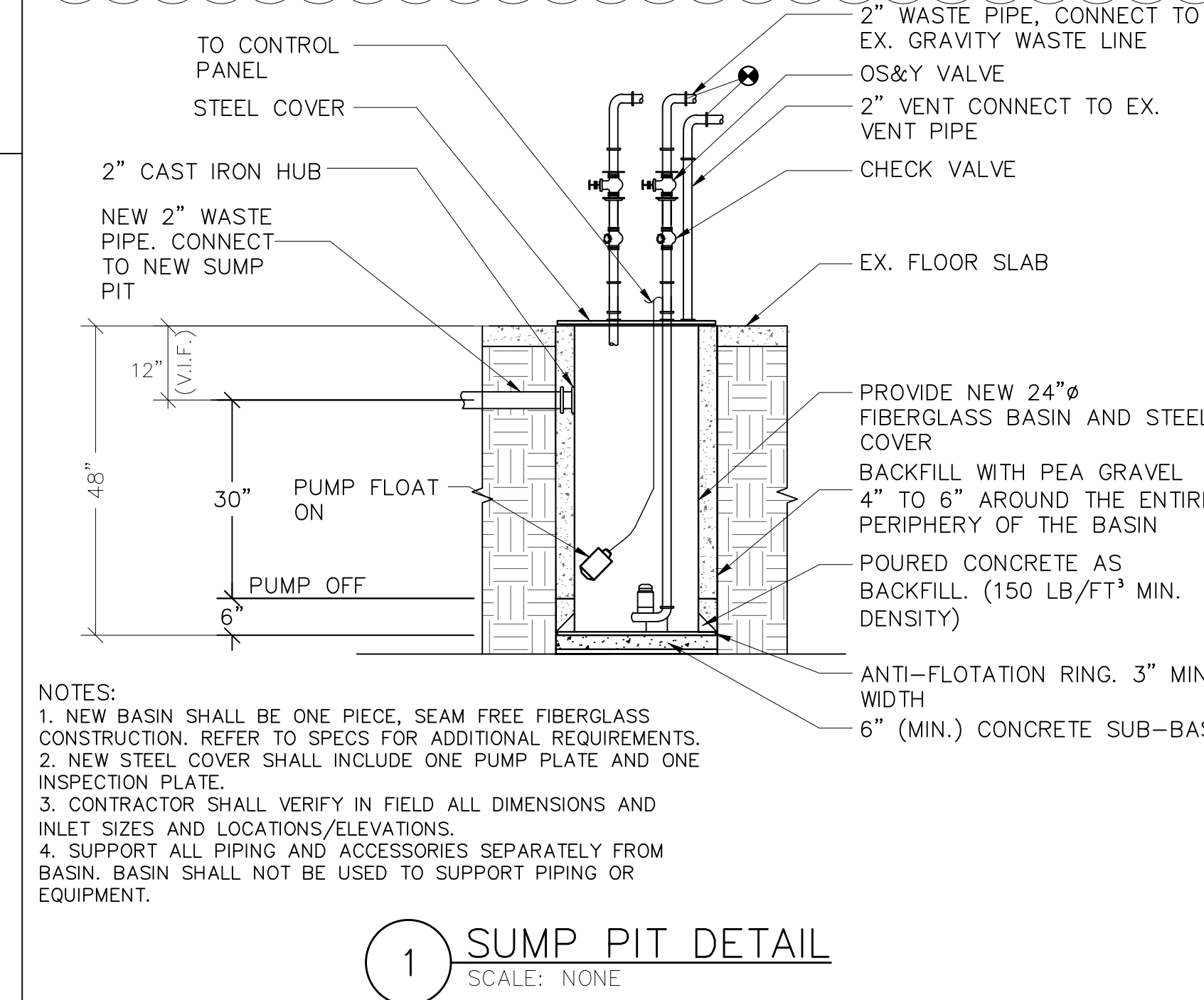
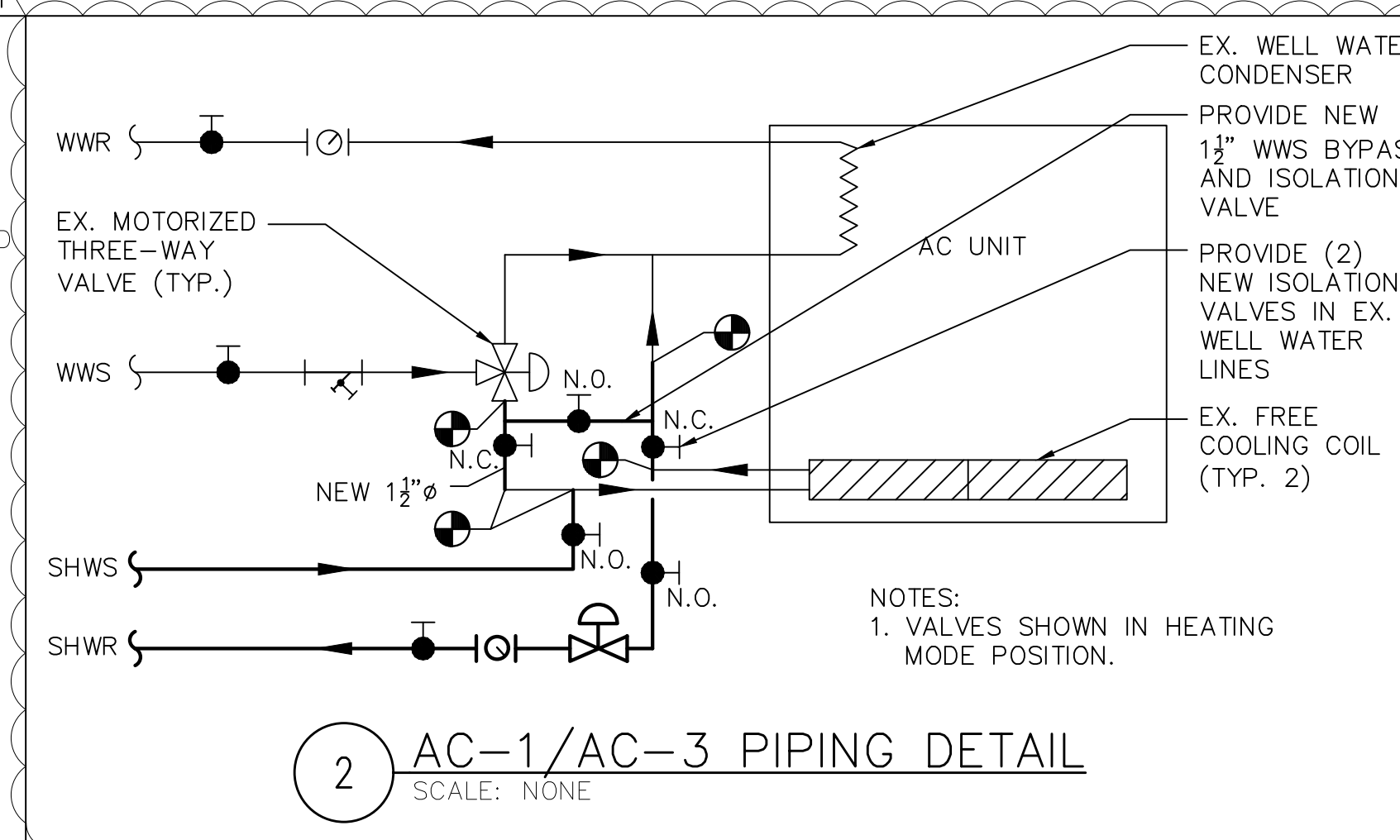
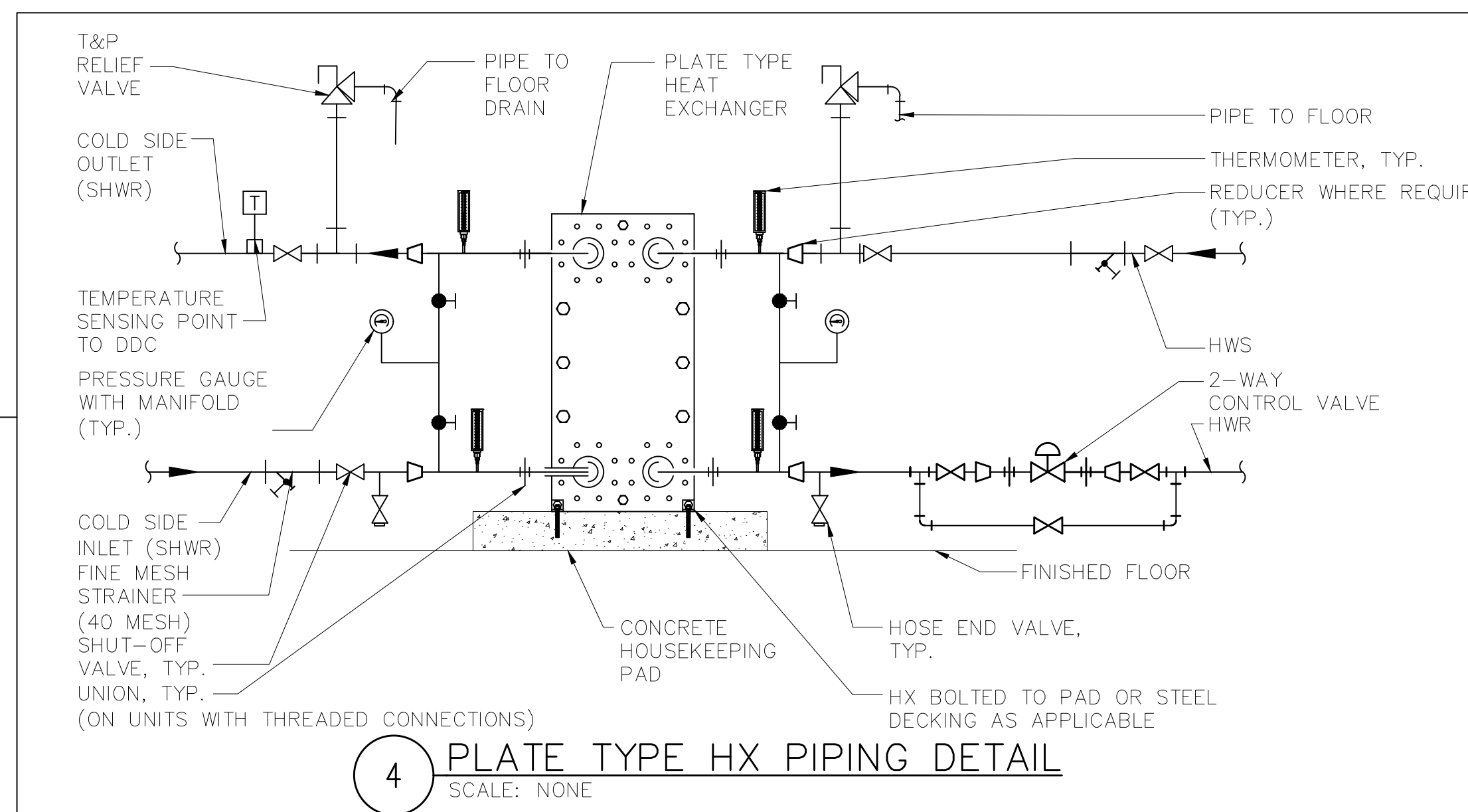
No.	ISSUE OR REVISION	DATE
1	ISSUED FOR BID	7/31/19
	ADDENDUM #1	8/8/19

No use, reproduction or dissemination may be made of this drawing and the concepts set forth without the prior written consent of OLA Consulting Engineers, PC. Copyright ©

PROJECT TITLE
**OSSINING PUBLIC LIBRARY
BOILER PLANT AND
HVAC UPGRADES**
53 CROTON AVENUE
OSSINING, NY 10562

DRAWING TITLE
**MECHANICAL/PLUMBING
SCHEDULES AND DETAILS**

SCALE	PROJECT NO.
AS NOTED	
DRAWN BY AC	DRAWING NO.
CHECKED BY JK	MP6.2
DATE 7/16/19	



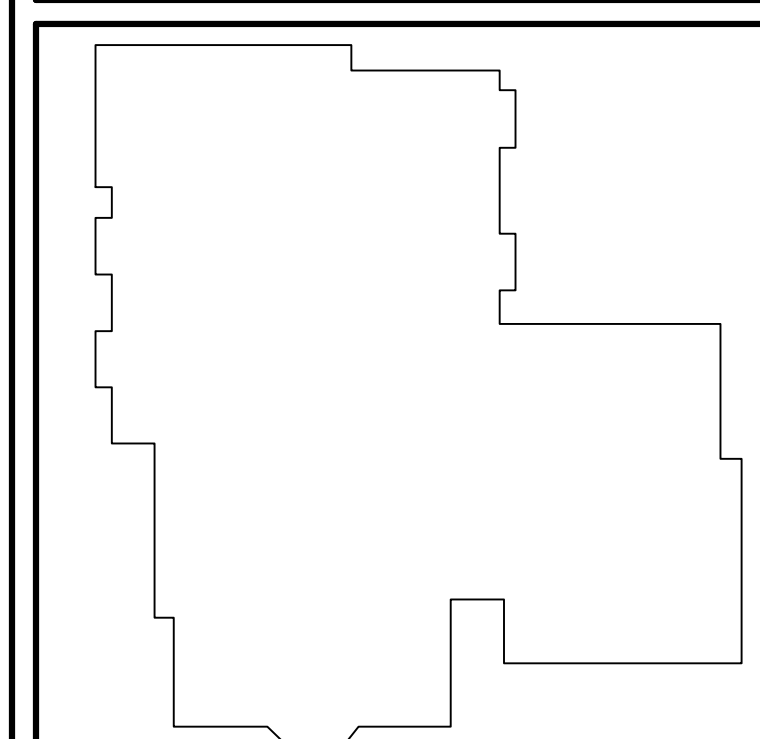
MAX. GPM	1	3.5	7	20	43	75
PIPE SIZE	1/2	3/4	1	1-1/2	2	2-1/2



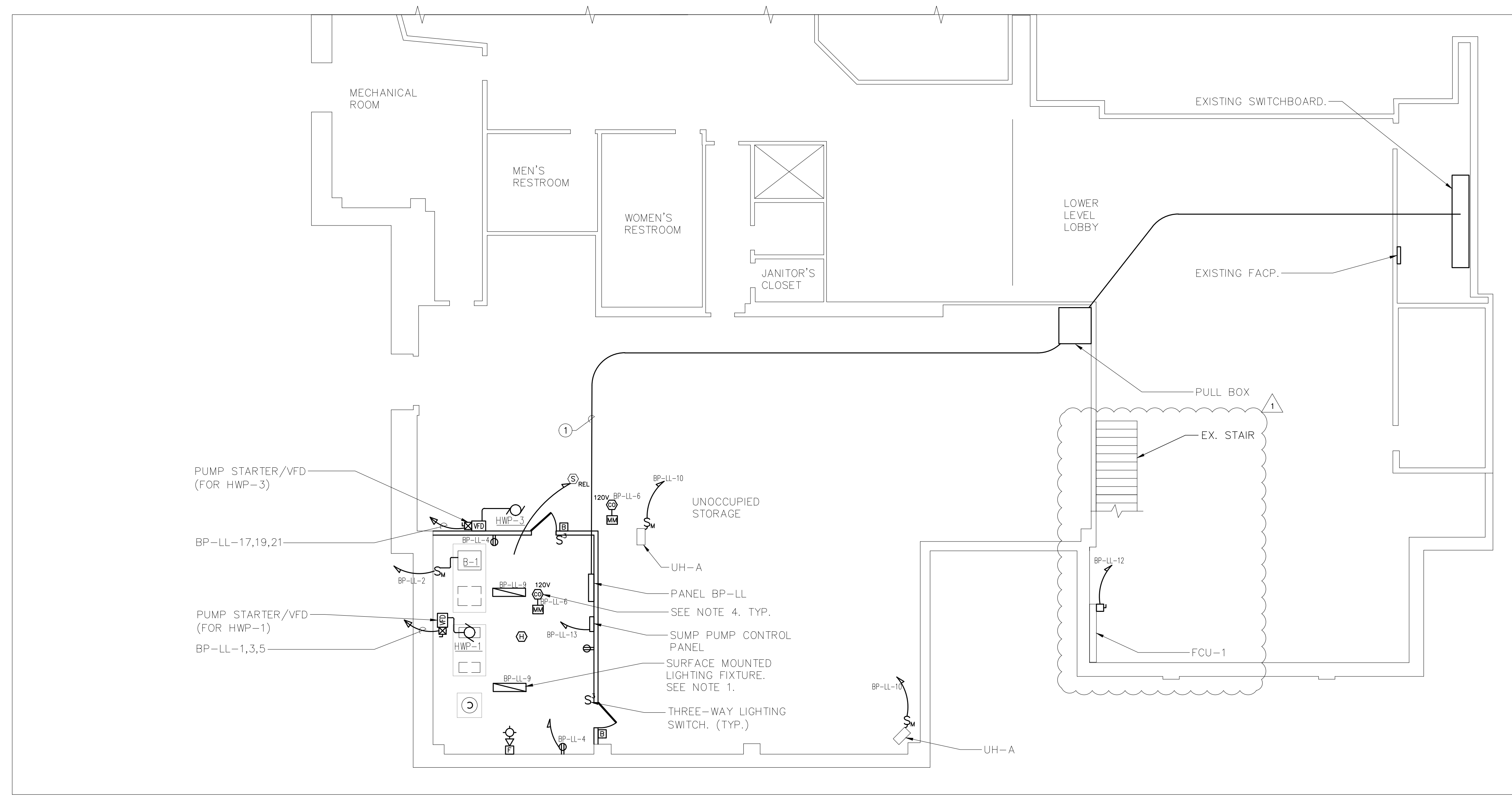
OLA Consulting Engineers
 50 Broadway, Hawthorne,
 New York 10532
 914.747.2800
 12 East 49th Street, 11th Flr.
 New York, NY 10017
 646.849.4110
 ola.com

CLIENT

OSSINING PUBLIC LIBRARY
 53 CROTON AVE
 OSSINING, NY 10562



KEY PLAN
 NORTH



1 ELECTRICAL LOWER LEVEL PARTIAL NEW WORK PLAN
 SCALE: 1/8" = 1'-0"
 NORTH

WIRING/CONDUIT LEGEND:

① 4-#2/0 & 1-#6 GND IN 2" C.

NOTES:

- PROVIDE (2) NEW LIGHTING FIXTURES TYPE ECLIPSE LIGHTING 574-OPL-LED/80W-3K-EBU-BK OR APPROVED EQUAL.
- REFER TO MECHANICAL DRAWINGS FOR EXACT LOCATION
- EQUIPMENT DENOTED WITH "EX." ARE EXISTING TO REMAIN.
- CARBON MONOXIDE SHALL BE 120V HARDWIRED. CARBON MONOXIDE ALARM SHALL BE SUPERVISED BY THE FACP VIA MONITOR MODULE. PROVIDE ALL PROGRAMMING AS REQUIRED. COORDINATE FINAL LOCATIONS IN FIELD.
- REFER TO DWG ES.1 FOR CIRCUIT OF NEW LIGHTING FIXTURES IN BOILER ROOM.
- COORDINATE EQUIPMENT INSTALLATION WITH THE FIELD CONDITIONS.

No.	ISSUE OR REVISION	DATE
1	ISSUED FOR BID	7/31/19

No use, reproduction or dissemination may be made of this drawing and the concepts set forth without the prior written consent of OLA Consulting Engineers, PC. Copyright ©

PROJECT TITLE
**OSSINING PUBLIC LIBRARY
 BOILER PLANT AND
 HVAC UPGRADES**
 53 CROTON AVENUE
 OSSINING, NY 10562

DRAWING TITLE
**ELECTRICAL
 LOWER LEVEL PARTIAL
 NEW WORK PLAN**

SCALE	PROJECT NO.
AS NOTED	
DRAWN BY CL	DRAWING NO.
CHECKED BY JF	E31
DATE 7/16/19	